





About the Author

Jakub Przybolewski

Ever since I remember, graphic has been my passion. I was interested in drawing cars as a child. When I grew up creating automotive objects in 3d space became my biggest hobby. I started my romance with a CGI in 2004 after watching one of television programs called Animaster.

Nowadays I live in Silesia (Poland), working as freelancer in many graphic areas (3d modelling, post production, animation etc.) improving and expanding my experience all the time. I like photography, traveling and listening independent music.

Feel free to have a look at my portfolio:

www.reflectvision.net



Designed for visualizations

Smart polygon distribution

Our 3d models are designed with care for your resources. There is no spear polygons. Wire is only dense where it is needed.

No displacements

Better stability, less ram consumption, faster rendering.

Single element objects

No need of attaching spread elements. Every object is already single element witch multi material.

Clear naming

Easily find and manipulate your objects in large scenes.

Made for LWF

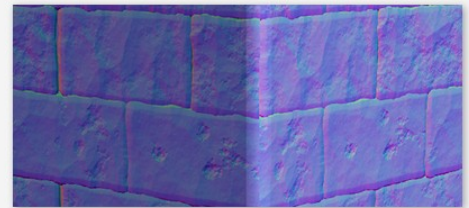
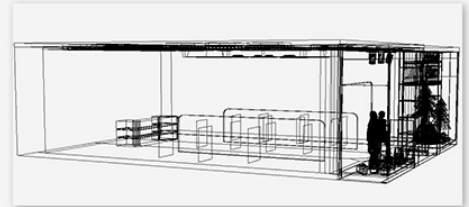
From very beginning all our models are prepared to work great in Linear Workflow.

High quality shaders

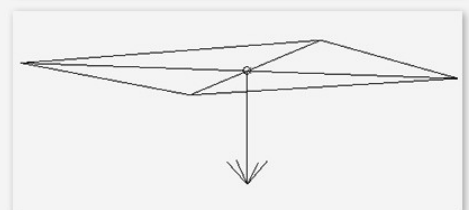
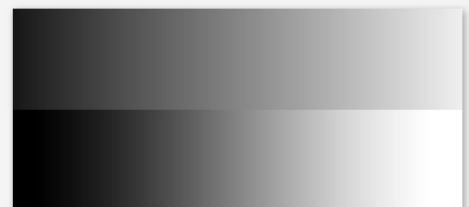
Every shader is prepared witch care. So even simple objects look great and detailed.

Optimized lighting sources

Our shops models using VrayLight material for lighting. This solution works much faster in large scenes witch multiple light sources.



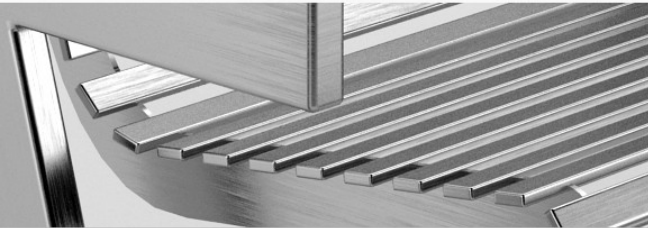
- vm_v3_017_chair2
- vm_v3_017_chair1
- vm_v3_017_tablecloth
- vm_v3_017_table
- vm_v3_017_accessories2
- vm_v3_017_accessories1
- vm_v3_017_umbrella_open



001

Description:

3d model of Modern metal bench with matched trash can.



002

Description:

3d model of Contemporary metal / Wood bench with matched trash can.



003

Description:

3d model of Classic wood park bench with matched trash can



004

Description:
3d model of small metal bench integrated with trash bin



005

Description:
3d model of long wooden bench with matched trash can



006

Description:
3d model of Art style wooden bench with matched trash can



007

Description:
3d model of Modern Art style bench with
matched trash bin



008

Description:
3d model of wooden eco design bench with
integrated trash bin



009

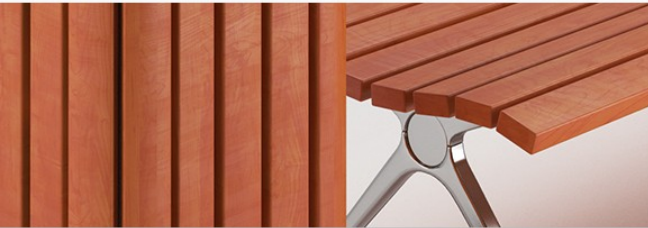
Description:
3d model of wooden B&B Italia bench with
matched trash can



010

Description:

3d model of simple wooden bench with matched trash bin



011

Description:

3d models of rattan chairs set with table and outdoor umbrella



012

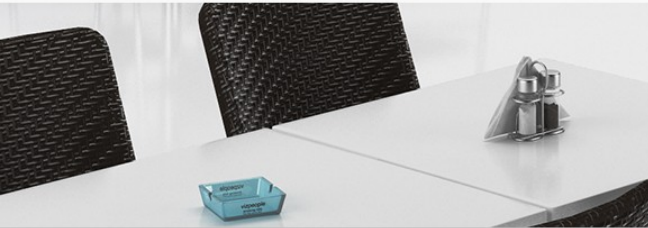
Description:

3d models of wooden Scandinavian tables and stools



013

Description:
3d models of rattan chairs set with table and outdoor umbrella



014

Description:
3d models of rattan chairs set with table



015

Description:
3d models of plastic Food Court chairs set



016

Description:
3d models of very classic chairs set with table.



017

Description:
3d models of modern well design chairs set, table, plates and beautiful outdoor umbrella



018

Description:
3d models of leather armchairs set for coffee shop



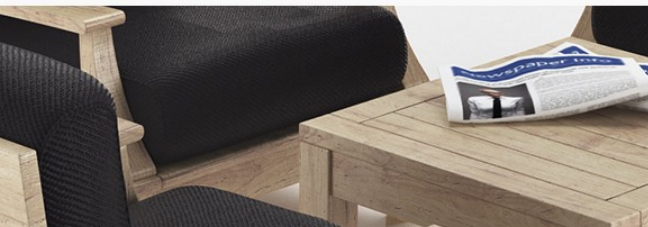
019

Description:
3d models of textile armchairs set and lamp for coffee shop



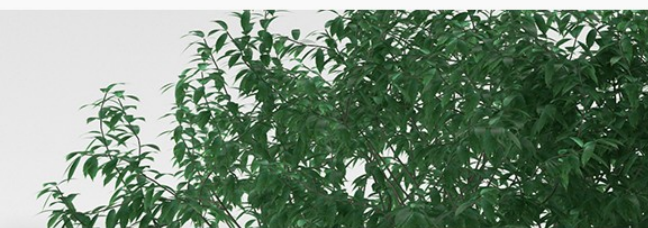
020

Description:
3d models of Scandinavian design armchairs set



021

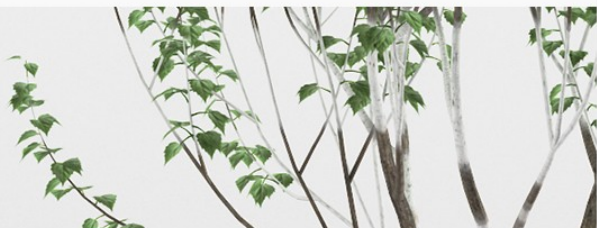
Description:
3d model of large leaf tree in steel pot



022

Description:

3d model of young birch-tree in red pot



023

Description:

3d model of minimalistic young tree on wooden base



024

Description:

3d model of young pine tree in steel pot



025

Description:
3d model of tree in round steel pot



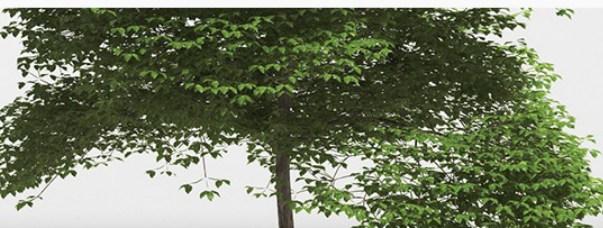
026

Description:
3d model of young tree in tall wooden pot



027

Description:
3d model of young tree in plastic pot



028

Description:
3d model of young bamboo bunch in steel pot



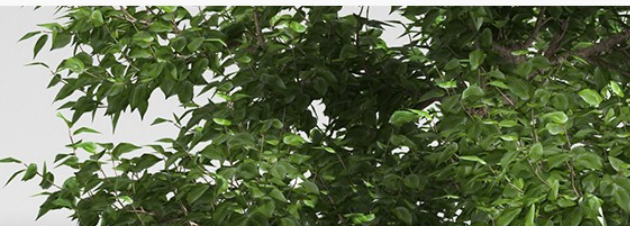
029

Description:
3d model tall bamboo hedge in wooden pot



030

Description:
3d model of young tree in ceramic pot



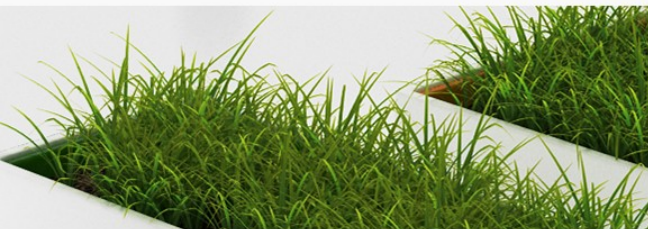
031

Description:
3d model of young tree in white pot



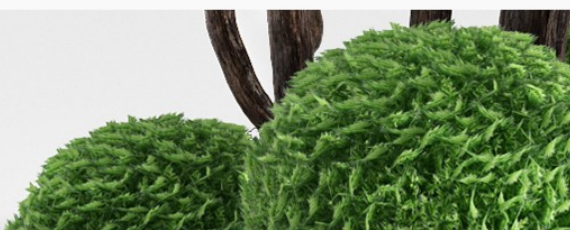
032

Description:
3d model of tetris style pots with grass



033

Description:
3d model of Art style ball tree



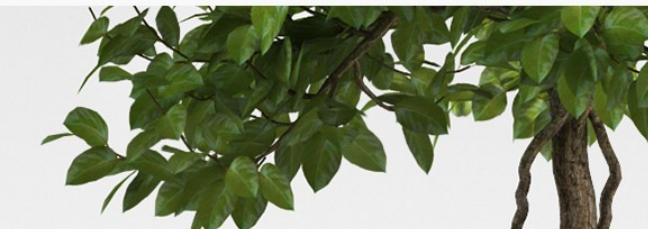
034

Description:
3d model of green wall in pot



035

Description:
3d model of small tree in white pot



036

Description:
3d model of illuminated flower pots with plants



037

Description:
3d model of young palm illuminated pot



038

Description:
3d model of large ottoman with young tree



039

Description:
3d model of young bush in modern pot



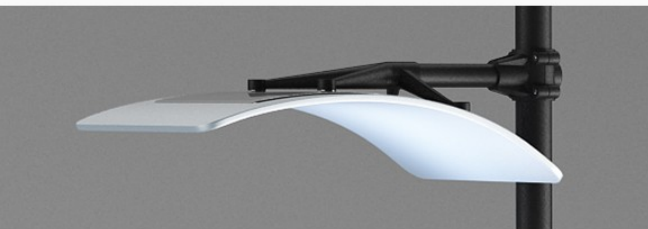
040

Description:
3d model of young palm in modern pot



041

Description:
3d model of tall street lamp



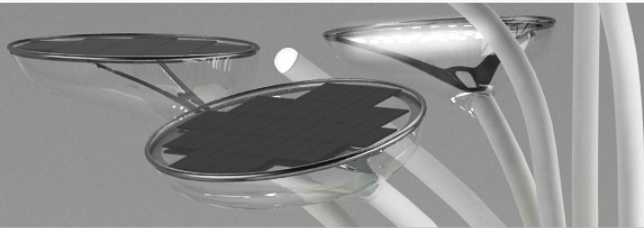
042

Description:
3d model of modern street lamp



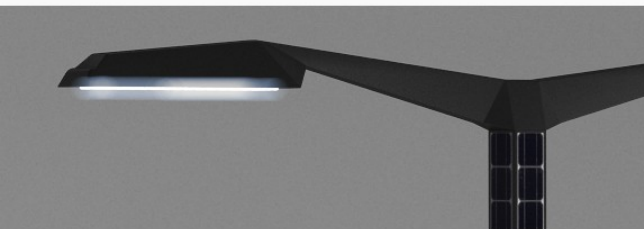
043

Description:
3d model futuristic tall lamp with bench



044

Description:
3d model of tall street lamp



045

Description:
3d model of tall Ad displays



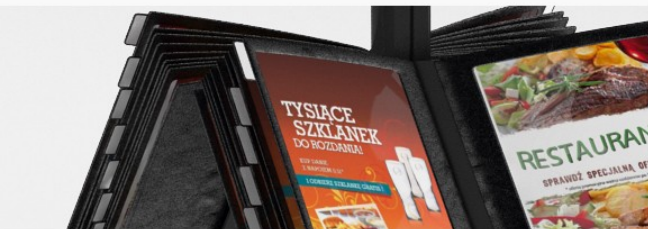
046

Description:
3d models of contemporary display systems



047

Description:
3d models of info signs



048

Description:
3d model bike rack with bike



049

Description:
3d models of recycle bin system



050

Description:
3d models of ATM



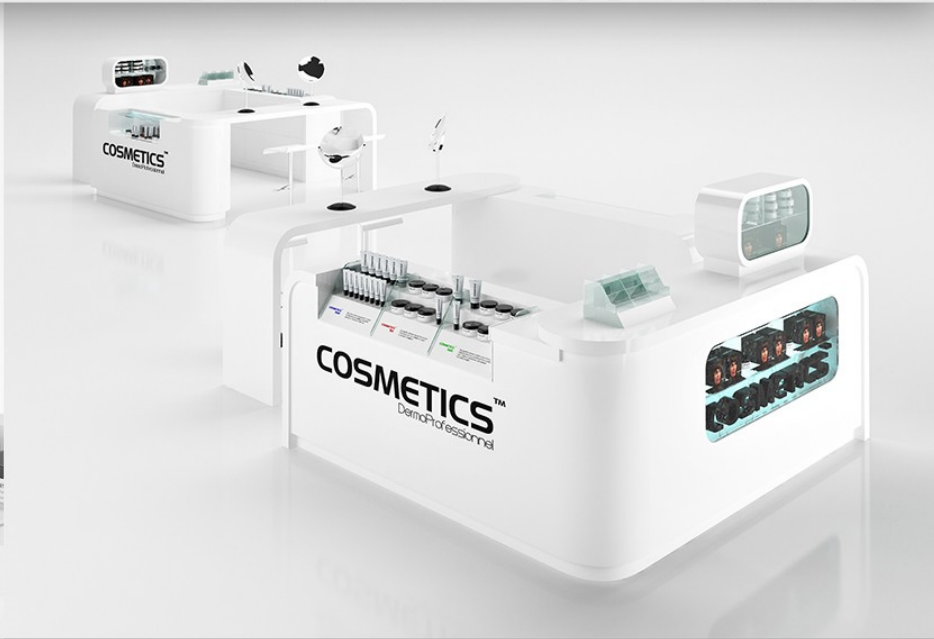
051

Description:
3d model of cosmetics sale stand



052

Description:
3d model of cosmetics sale stand



053

Description:
3d models of banking sale stand



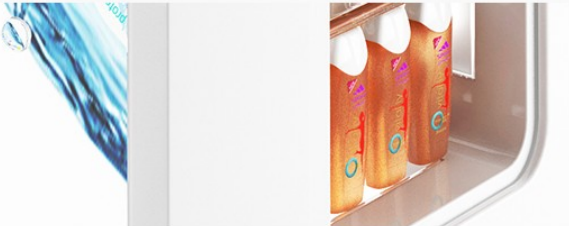
054

Description:
3d model of cellular sale stand



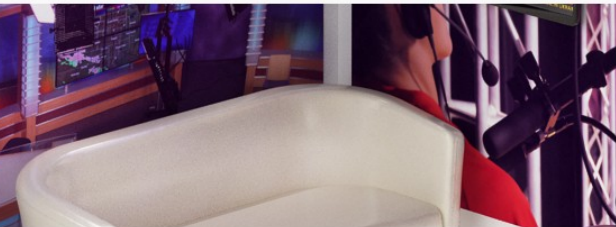
055

Description:
3d model of cosmetics sale stand



056

Description:
3d models of tv info stand



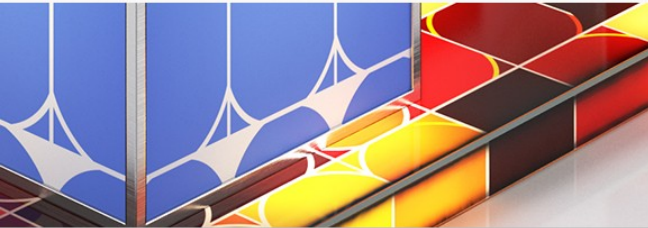
057

Description:
3d model of cellular sale stand



058

Description:
3d model of financial sale stand



059

Description:
3d models of computers sale stand



060

Description:
3d model of cigarettes sale stand



061

Description:
3d model of Shop window with low poly interior



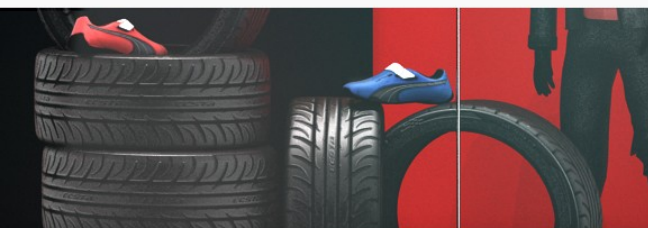
062

Description:
3d model of Shop window with low poly interior



063

Description:
3d model of Shop window with low poly interior



064

Description:
3d model of Shop window with low poly interior



065

Description:
3d model of Shop window with low poly interior



066

Description:
3d model of Shop window with low poly interior



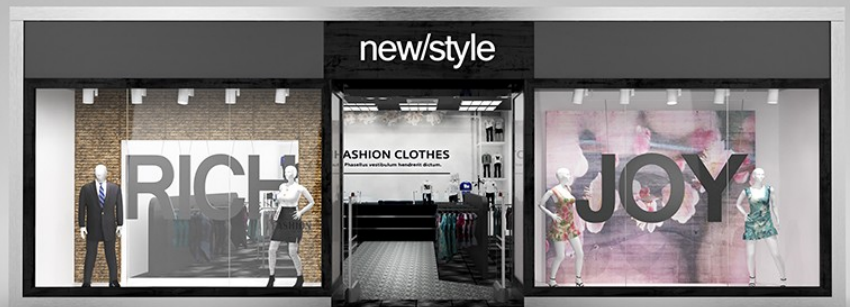
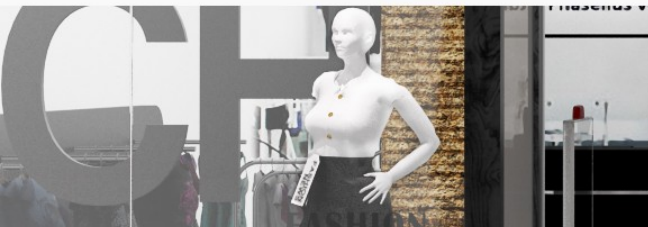
067

Description:
3d model of Shop window with low poly interior



068

Description:
3d model of Shop window with low poly interior



069

Description:
3d model of Shop window with low poly interior



070

Description:
3d model of Shop window with low poly interior



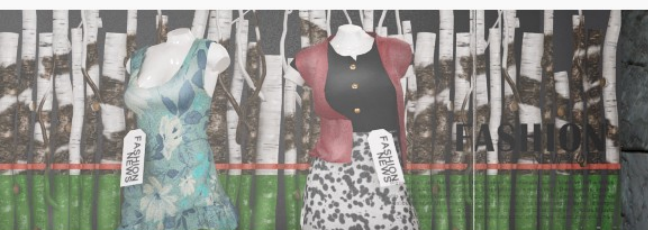
071

Description:
3d model of Shop window with low poly interior



072

Description:
3d model of Shop window with low poly interior



073

Description:
3d model of Shop window with low poly interior



074

Description:
3d model of Shop window with low poly interior



075

Description:
3d model of Shop window with low poly interior



076

Description:
3d model of Shop window with low poly interior



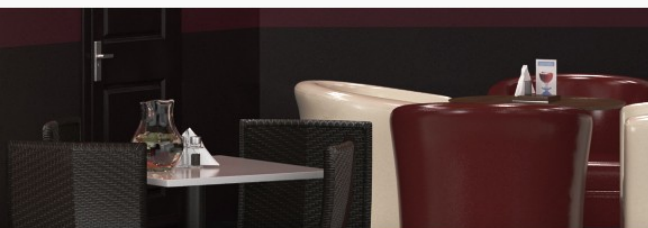
077

Description:
3d model of Shop window with low poly interior



078

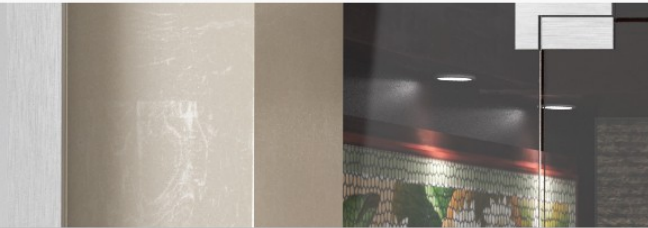
Description:
3d model of coffee shop with interior



079

Description:

3d model of coffee shop with interior



080

Description:

3d model of coffee shop with interior

